

QUICKSTART GUIDE

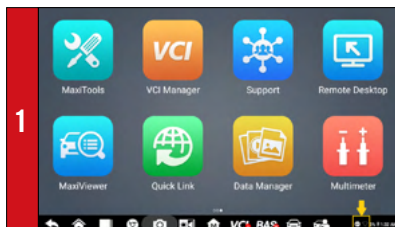
Please be advised this tool ships with minimal, non-vehicle specific software.
To download software to use on the vehicles you service, the tool must be registered first.
Please follow the following steps:

Contents

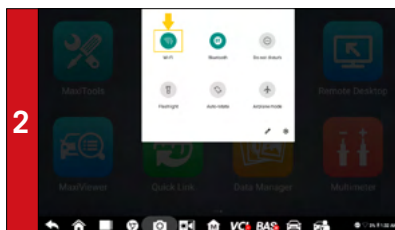
1. Register Tool	1
1.1 Registration Via Tool	2
1.2 Registration Via a Windows-based PC	3
2. Download Software	4
3. Pair BAS Tester Box to Tablet	4
3.1 Pair Tablet with BAS Tester Box Via Bluetooth	5
3.2 Check for BAS Firmware	6
4. Pair VCI to Tablet	7
4.1 Pair Tablet with VCI Via Bluetooth	7
4.2 Check for VCI Firmware	8
5. Print via Windows PC to Wi-Fi Printer	9

QUICKSTART GUIDE

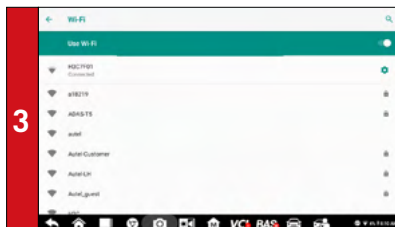
1. REGISTER TOOL



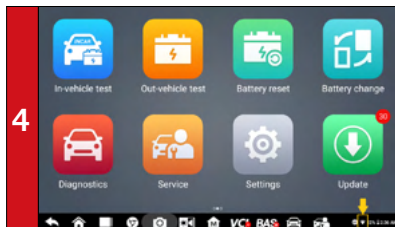
- To register your tool, you must connect your tool to Wi-Fi first.
- Power on the BT609. Tap on the lower right corner of the screen



- The Quick Settings menu will display.
- Long press the Wi-Fi icon to enter the Wi-Fi setting menu



- Swipe the Wi-Fi toggle to turn on Wi-Fi.
- Select your network and enter password to sign in

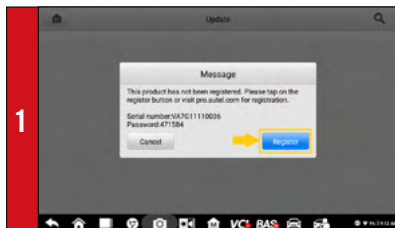


- The Wi-Fi icon will light when connection is established
- Once the password of the network is saved, the device will be automatically connected to the network.

QUICKSTART GUIDE

1. REGISTER TOOL

1.1 REGISTRATION VIA TABLET



1

- After the device is connected to Wi-Fi, access **Update**
- A **dialog box** will display asking you to register your tool
- Tap **Register**



2

- A **sign-in** screen will display
- Create an Autel ID using an accessible email address



3

- Enter your email address, password and tap **Acquire verification code**
- Check your email for the verification code, enter the verification code, and tap **Sign up**



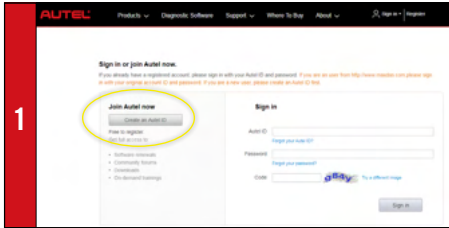
4

- The **serial number** and **password** fields will be automatically completed.
- Tap **REGISTER**

QUICKSTART GUIDE

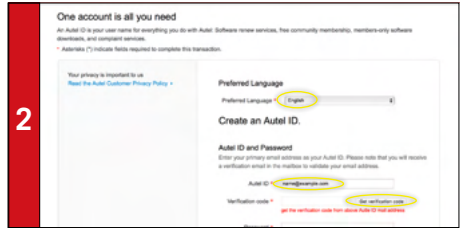
1. REGISTER TOOL

1.2 REGISTRATION VIA PC



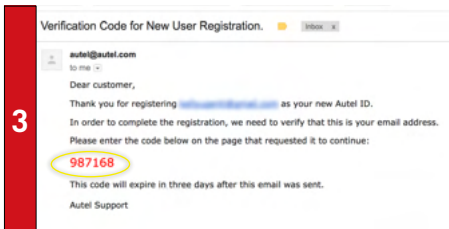
1

- Using a computer, launch an Internet browser and go to <http://pro.autel.com>
- Click **Create Autel ID** on the left side of the screen
- If you already have an Autel ID, sign in and skip to Step 6



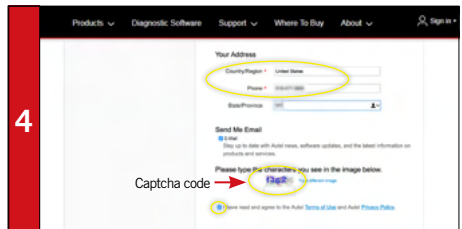
2

- Set preferred language
- Enter your email address as Autel ID
- Click **Get Verification Code**



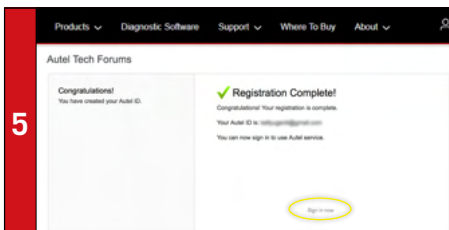
3

- An email titled "Verification Code for New User Registration" will be sent to you.
- Open email and copy the 6-digit verification code
- Return to <http://pro.autel.com> to continue registration



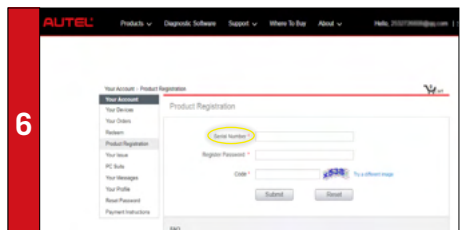
4

- Enter verification code and all other required information marked with a red asterisk
- Enter Captcha code as shown
- Read the Autel **Terms of Use** and **Privacy Policy** and select the check box



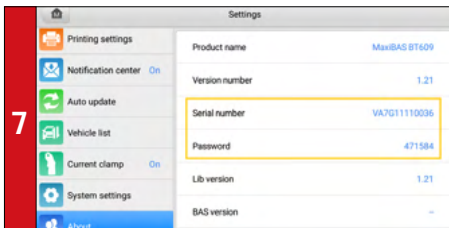
5

- Click **Create Autel ID** at the bottom of the screen
- Registration Complete screen will display.
- Click **Sign in Now** and log in



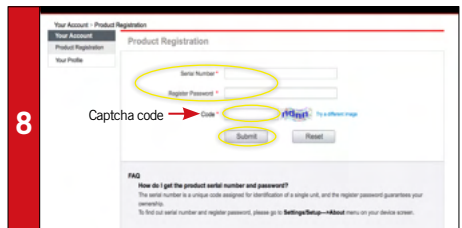
6

- Select Product Registration from the menu list
- Product Registration screen will display.



7

- To locate the tool's serial number and password: from the Main Menu select the **Setting** icon and tap **About**

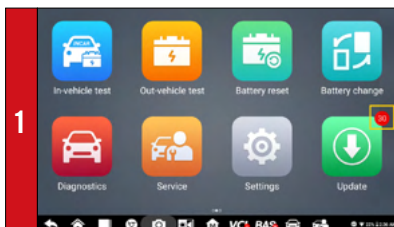


8

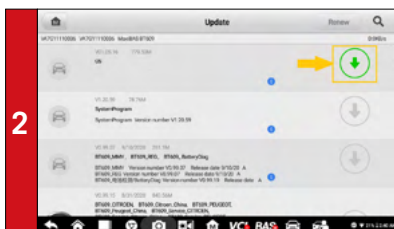
- Input your tool's Product Serial Number and Password
- Type Captcha code as shown
- Click **Submit** to complete tablet registration

QUICKSTART GUIDE

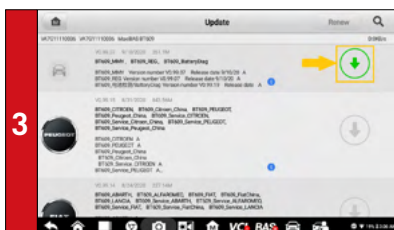
2. DOWNLOAD SOFTWARE



- If updates are available, the number of available updates will display above the green Update button
- Select the **Update** button to view a list of available updates.



- Download the system update by selecting the download icon on the right



- Download the software update by selecting the download icon on the right

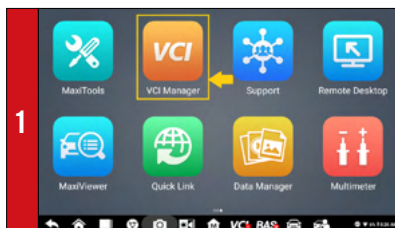


- Download update for each vehicle manufacturer you service

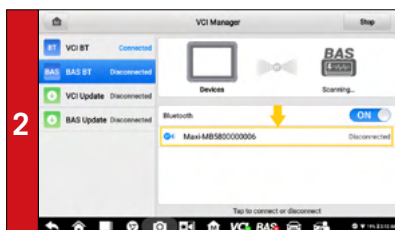
QUICKSTART GUIDE

3. PAIR BAS TESTER BOX TO TABLET

3.1 PAIR TABLET WITH BAS TESTER BOX VIA BLUETOOTH



- Power on the BAS tester box
- Select **VCI Manager** from the main screen and tap **BAS BT**



- Your tool will automatically start scanning for available BAS tester boxes. Found devices are listed on the right of the screen.
- Press your BAS tester box serial number to pair the tablet with BAS tester box



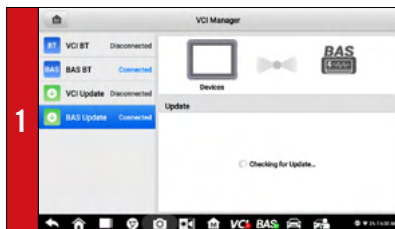
- The BAS icon at the upper right corner will light green when connection is established

QUICKSTART GUIDE

Ensure your network is accessible and has a stable connection.

3. PAIR BAS TESTER BOX TO TABLET

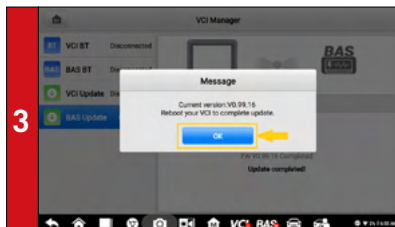
3.2 CHECK FOR BAS FIRMWARE



- Select **VCI Manager** from the main screen and tap **BAS Update**
- Your device will automatically checks for new BAS firmware version



- A button will display when new firmware version is available
- Select **Update now** to download the new BAS firmware

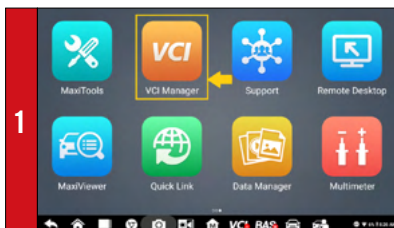


- A message dialog box will display when the download finishes
- Tap **OK** to complete the update

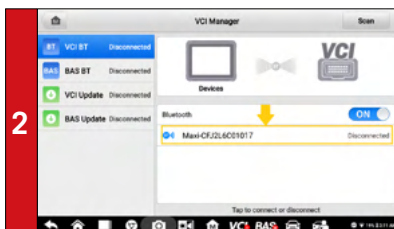
QUICKSTART GUIDE

4. PAIR VCI TO TABLET

4.1 PAIR TABLET WITH VCI VIA BLUETOOTH



- Connect the VCI to a vehicle or USB power source
- Select **VCI Manager** from the main screen and tap **VCI BT**



- Your tool will automatically start scanning for available VCI devices. Found devices are listed on the right of the screen.
- Press your VCI device serial number to pair the tablet with VCI.

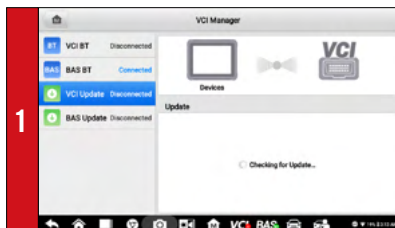


- The VCI icon on the upper right corner will light green when connection is established

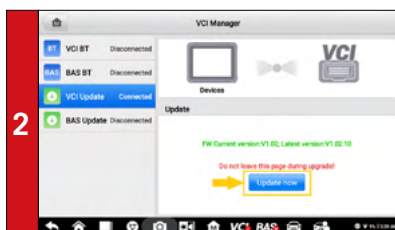
QUICKSTART GUIDE

4. PAIR VCI TO TABLET

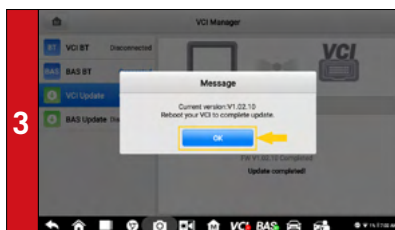
4.2 CHECK FOR VCI FIRMWARE



- Connect the VCI to a vehicle and turn ignition on.
- Select **VCI Manager** from the main screen and tap **VCI Update**
- Your device will automatically checks for new VCI firmware version



- A button will display when new VCI firmware version is available
- Select **Update now** to download the new VCI firmware

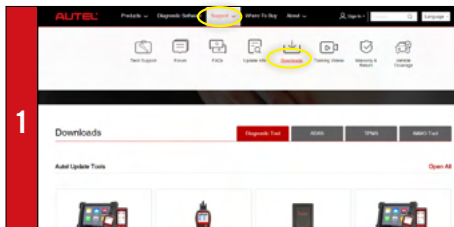


- A message dialog box will display when the download finishes
- Tap **OK** to complete the update

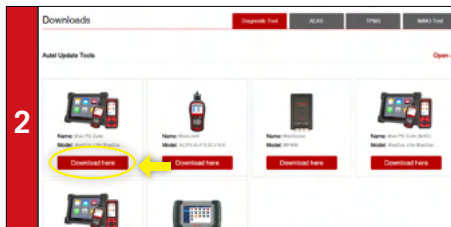
QUICKSTART GUIDE

5. PRINT VIA WINDOWS PC TO WI-FI PRINTER

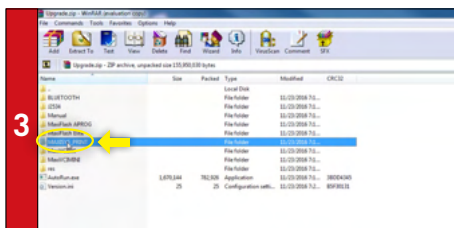
Works with any printer with a Wi-Fi connection. No need for special software or driver on the tablet.



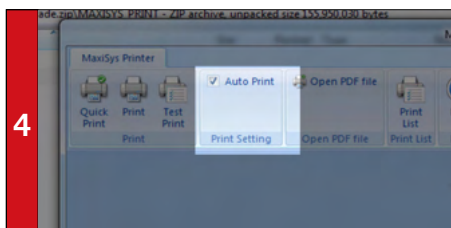
- Make sure your Window PC and tablet are on the same Wi-Fi network
- On your computer, go to Autel.com, select **Support > Downloads > Autel Update Tools**



- Locate the **MaxiSYS PC Suite** software and click on the **Download Here** button
- Open the zip file



- Select **MaxiSYS Print**, then click the setup.exe file to install the program



- Within the program dialogue box, check **Auto Print** to automatically use the default printer
- Select **Quick Print** to use the default printer or select **Print** to choose a printer